

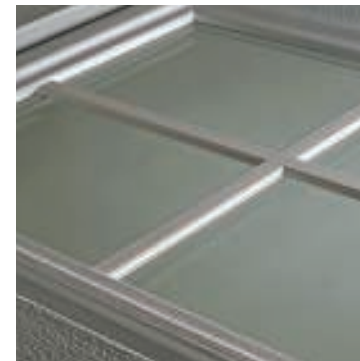


Recessed Panel Series





R-values by models	
2294 Flush	12.35
2294	12.35
2296	12.35
2298	12.35



C.H.I. Recessed Panel Series
A legacy defined.

First manufactured in 1981 the recessed panel garage door is a celebration of C.H.I. heritage. A perfect representation of where we came from and what we stand for.



C.H.I. Recessed Panel Series

Make an entrance.



Flush Panel: 2294 Flush



Long Panel: 2294



Combo Panel: 2296



Short Panel: 2298

MODEL INSULATION



1-3/8" CFC Free Urethane with steel back

- R-values: 12.35

OPTIONS

WINDOW DESIGNS⁴

Long



Plain



Stockton



Madison

Combo



Plain



Stockton



Madison

Short



Plain



Stockton



Madison

GLASS³



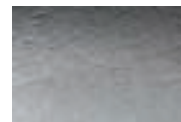
Plain



Obscure



Tinted



Glue Chip



Frosted

COLORS²

White

Almond

Sandstone

SPECIFICATIONS

Product	2294 Flush	2294	2296	2298
Section Joint	Tongue and groove	Tongue and groove	Tongue and groove	Tongue and groove
Section Thickness	2"	2"	2"	2"
Section Material	Steel with woodgrain embossed aluminum overlays	Steel with woodgrain embossed aluminum overlays	Steel with woodgrain embossed aluminum overlays	Steel with woodgrain embossed aluminum overlays
Insulation	1-3/8" foam injected cfc [chlorofluorocarbon] free urethane	1-3/8" foam injected cfc [chlorofluorocarbon] free urethane	1-3/8" foam injected cfc [chlorofluorocarbon] free urethane	1-3/8" foam injected cfc [chlorofluorocarbon] free urethane
R-value¹	12.35	12.35	12.35	12.35
Options				
Window Designs⁴	Plain, madison, stockton	Plain, madison, stockton	Plain, madison, stockton	Plain, madison, stockton
Glass³	7/16" - Plain, obscure, tinted, glue chip, frosted	7/16" - Plain, obscure, tinted, glue chip, frosted	7/16" - Plain, obscure, tinted, glue chip, frosted	7/16" - Plain, obscure, tinted, glue chip, frosted
Colors²	White, almond, sandstone	White, almond, sandstone	White, almond, sandstone	White, almond, sandstone
Appearance and Endurance Package	Available	Available	Available	Available
Warranty				
Sections	Lifetime	Lifetime	Lifetime	Lifetime
Hardware	6-years	6-years	6-years	6-years
Springs	3-years for doors up to 8' high	3-years for doors up to 8' high	3-years for doors up to 8' high	3-years for doors up to 8' high

¹ R-value testing is in accordance with ASTM C518 standards. ² Refer to your local C.H.I. dealer for exact color match. ³ All glass is either transparent or semi-transparent. ⁴ Window designs utilize vinyl dimensional grilles applied to the exterior of glass.

Ask Your Door Professional at:



The Door to Quality.™

C.H.I. Overhead Doors | 1485 Sunrise Drive | Arthur, IL 61911 | USA
chiohd.com